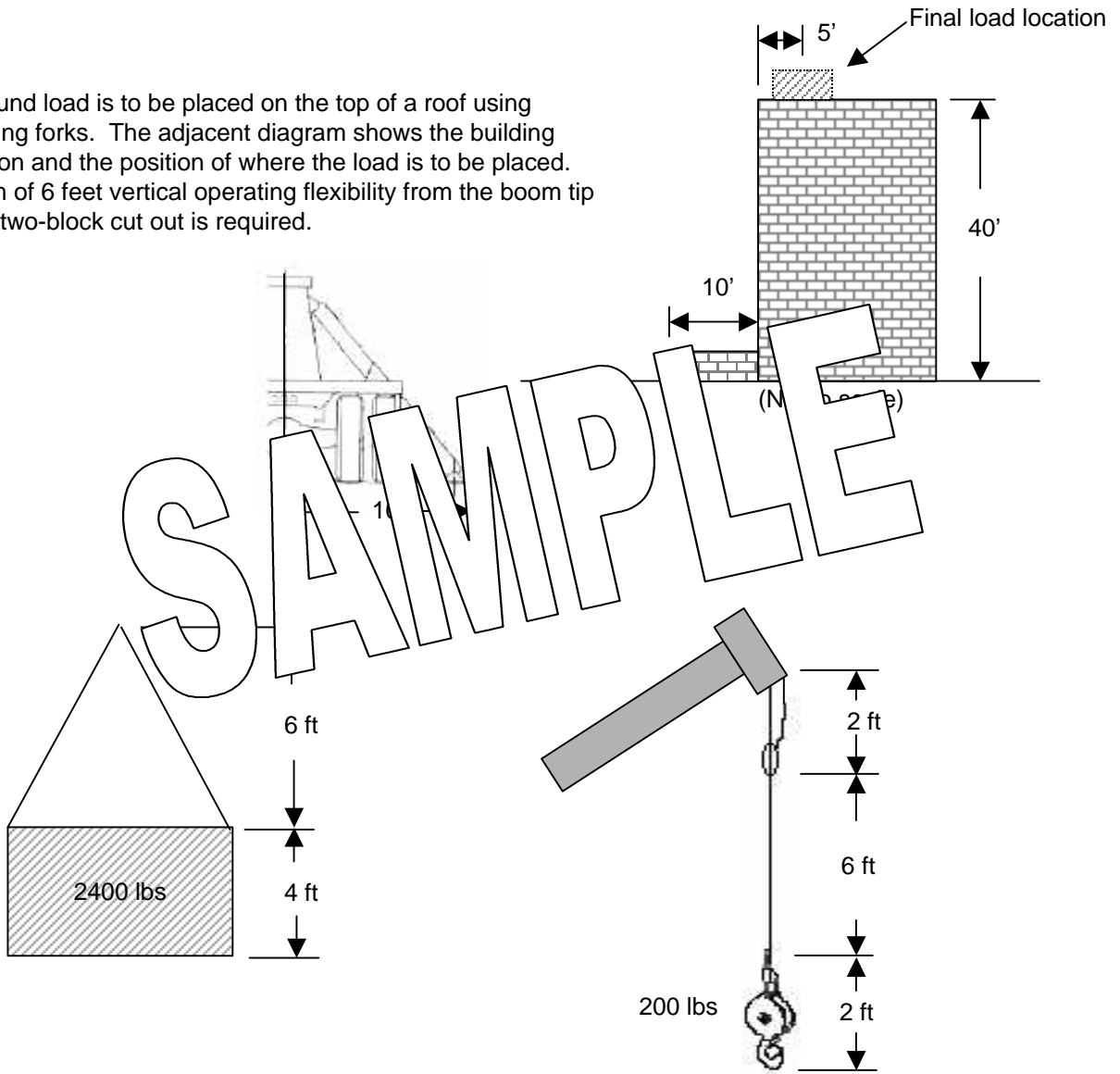


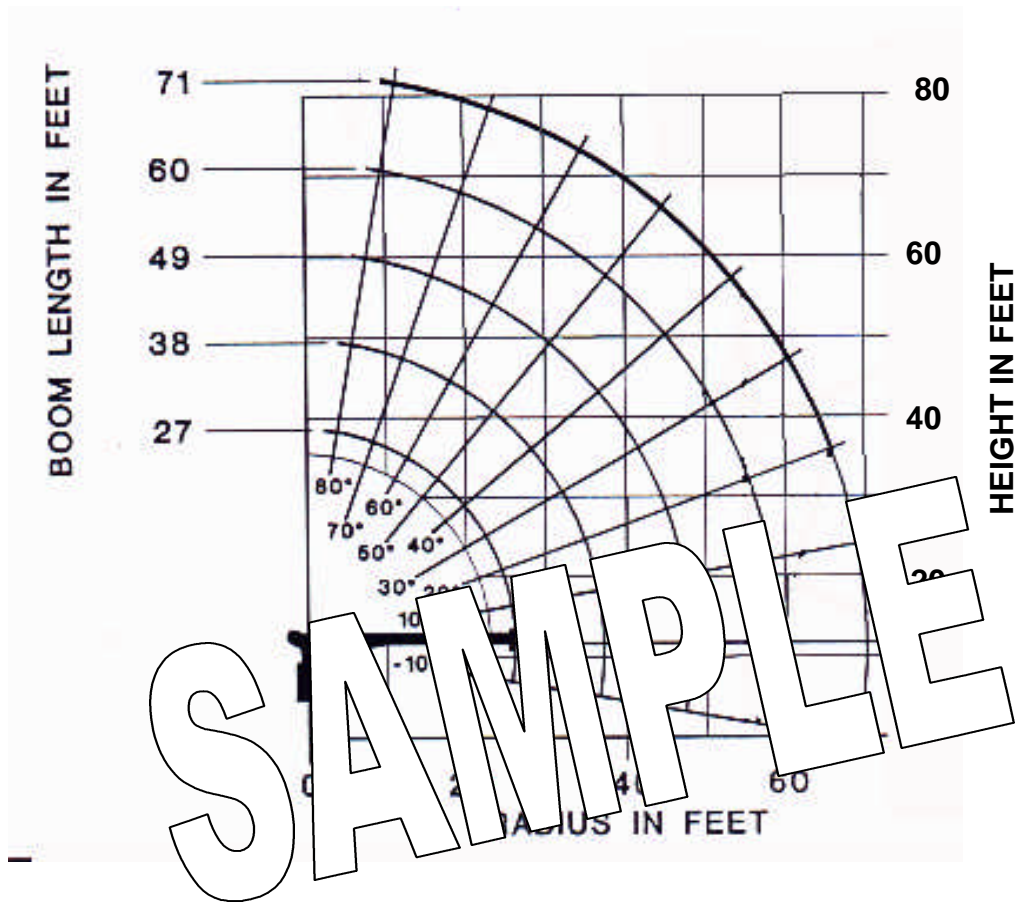
LOAD CHART EXERCISE

NAME: _____

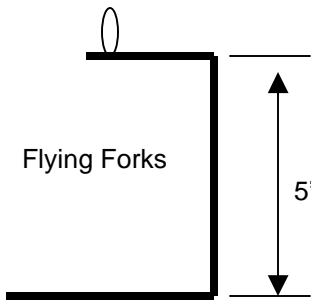
DATE: _____

A 2400 pound load is to be placed on the top of a roof using a set of flying forks. The adjacent diagram shows the building configuration and the position of where the load is to be placed. A minimum of 6 feet vertical operating flexibility from the boom tip to the anti-two-block cut out is required.

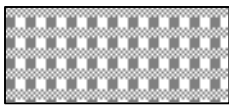




LOAD RADIUS (FEET)	LOADED BOOM ANGLE	27FT BOOM (LBS)	LOADED BOOM ANGLE	38FT BOOM (LBS)	LOADED BOOM ANGLE	49FT BOOM (LBS)	LOADED BOOM ANGLE	60FT BOOM (LBS)	LOADED BOOM ANGLE	71FT BOOM (LBS)	RATED LOAD DEDUCTIONS (LBS)
10	67	17,900	74.5	16,100	78.5	14,900					(LBS)
12	62.5	15,400	71.5	13,900	76	12,800	79	11,800			DOWNHAUL
14	57	13,700	68	12,200	73.5	11,200	77	10,400	79.5	10,000	WEIGHT = 150
16	52	12,300	64.5	10,900	71	9,900	75	9,200	77.5	8,800	
20	39.5	10,000	57	9,000	66	8,200	71.5	7,600	70.5	7,200	ONE SHEAVE
25	17	7,600	49	7,500	60	6,800	66.5	6,200	70.5	5,800	BLOCK = 200
30			37.5	6,300	53	5,700	61	5,200	66	4,900	
35			21	5,000	44.5	4,900	55	4,500	61.5	4,200	TWO SHEAVE
40					35	4,200	49	3,900	56.5	3,600	BLOCK = 355
45					22	3,500	42	3,300	51.5	3,150	
50							34	2,900	46	2,750	STOWED
55							23	2,500	40	2,400	JIB = 500
60									33	2,100	
65									23.5	1,750	
70									4	1,100	
	0	6,000	0	3,800	0	2,400	0	1,550	0	950	



350 lbs

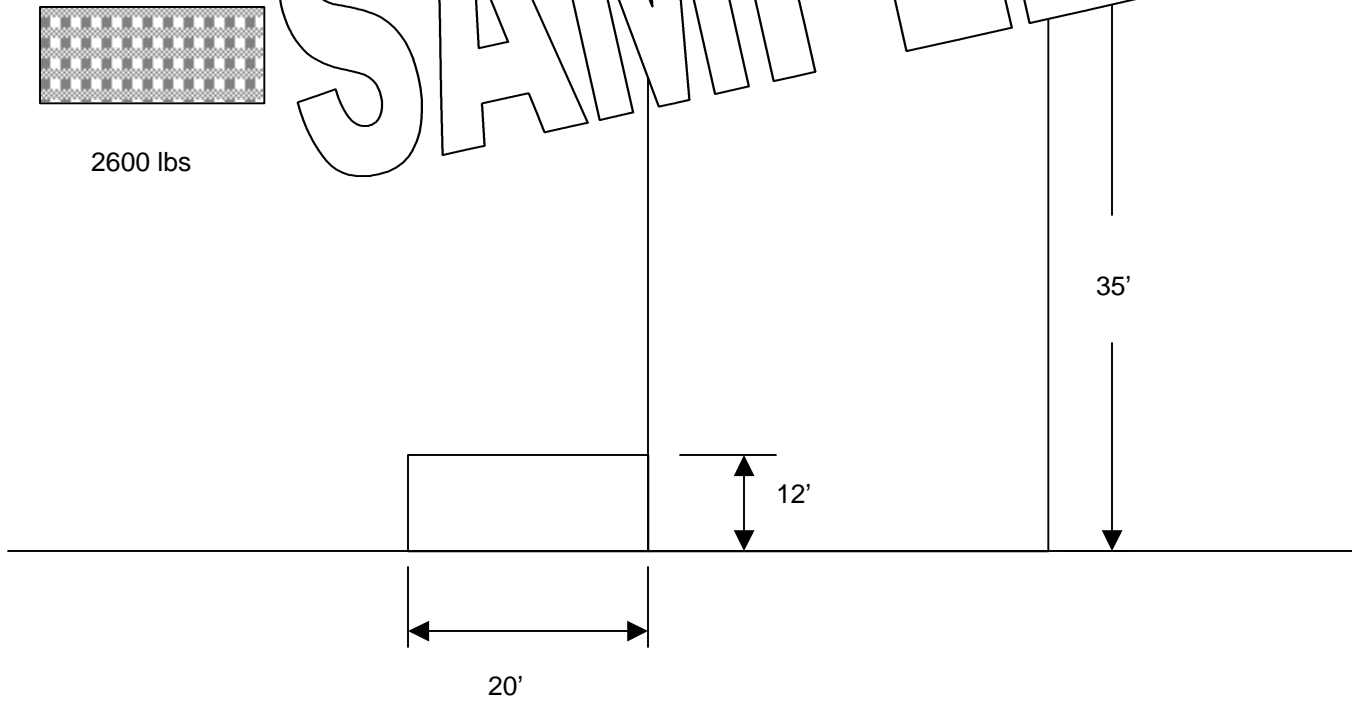


2600 lbs

SAMPLE

15'

A large, stylized, outlined word "SAMPLE" is tilted upwards. A horizontal double-headed arrow above the "P" and "L" indicates a width of 15 feet.



BOOM TRUCK OPERATOR SAFETY TRAINING PRACTICAL TEST

Name: _____

Date: _____

EXERCISE	SAT.	UNSAT.
Boom Truck Inspection	_____	_____
Boom Truck Set Up	_____	_____
Picking Load From Truck	_____	_____
Picking Load From Ground	_____	_____
Comments: _____		

SAMPLE

BOOM TRUCK OPERATOR SAFETY TRAINING PRACTICAL TEST

Name: _____

Date: _____

EXERCISE	SAT.	UNSAT.
Boom Truck Inspection	_____	_____
Boom Truck Set Up	_____	_____
Picking Load From Truck	_____	_____
Picking Load From Ground	_____	_____
Comments: _____		

